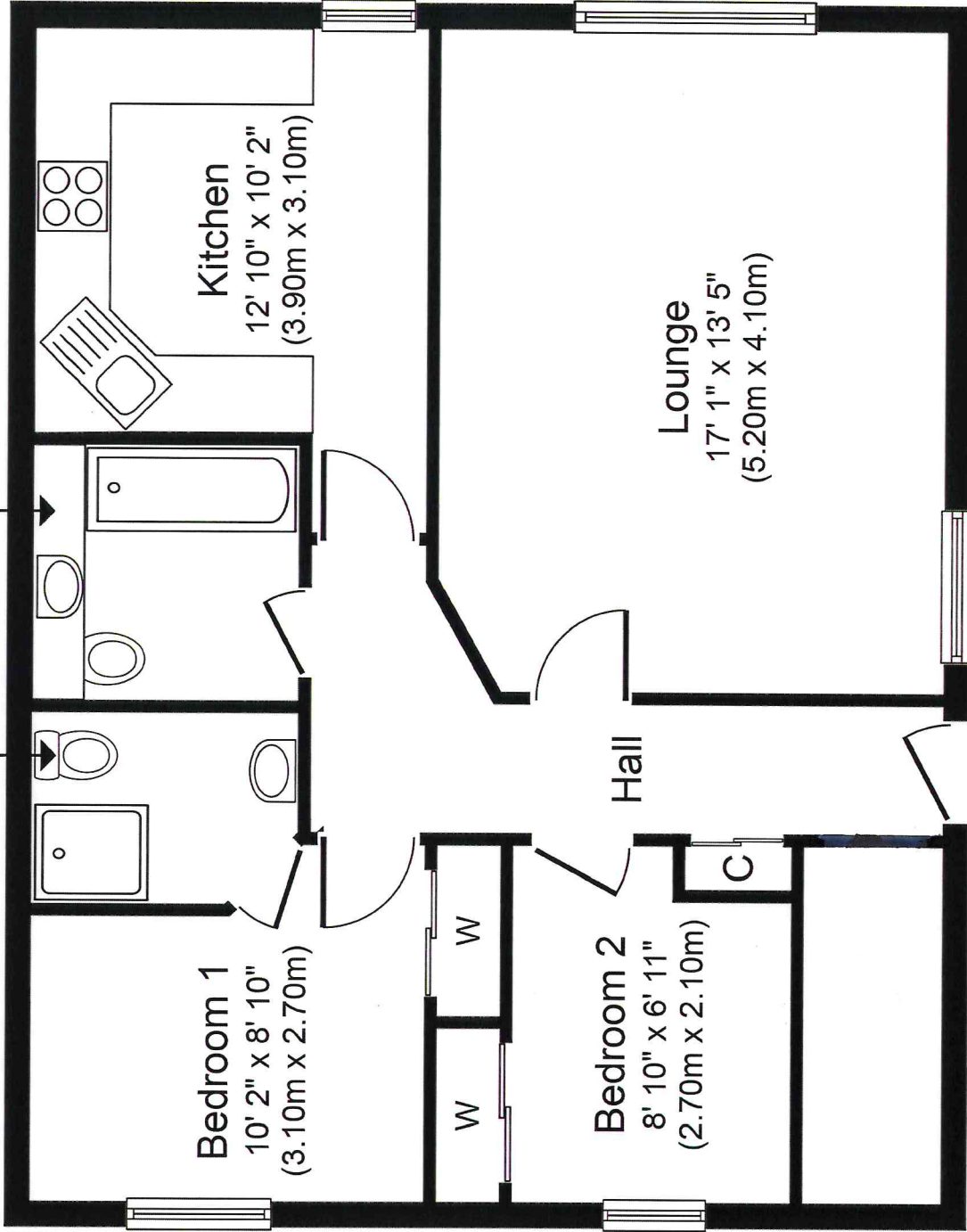


**En-suite**  
6' 11" x 4' 11"  
(2.10m x 1.50m)

**Bathroom**  
6' 11" x 6' 7"  
(2.10m x 2.00m)



**Bedroom 1**  
10' 2" x 8' 10"  
(3.10m x 2.70m)

**Kitchen**  
12' 10" x 10' 2"  
(3.90m x 3.10m)

**Bedroom 2**  
8' 10" x 6' 11"  
(2.70m x 2.10m)

Hall

**Lounge**  
17' 1" x 13' 5"  
(5.20m x 4.10m)

**Approximate Floor Area**  
714 sq. ft.  
(66.3 sq. m.)

Whilst every attempt has been made to ensure the accuracy of the floor plan contained here, measurements of doors, windows, rooms and any other items are approximate and no responsibility is taken for any error, omission or mis-statement. The measurements should not be relied upon for valuation, transaction and/or funding purposes. This plan is for illustrative purposes only and should be used as such by any prospective purchaser or tenant. The services, systems and appliances shown have not been tested and no guarantee as to their operability or efficiency can be given.

Copyright V360 Ltd 2024 | [www.houseviz.com](http://www.houseviz.com)